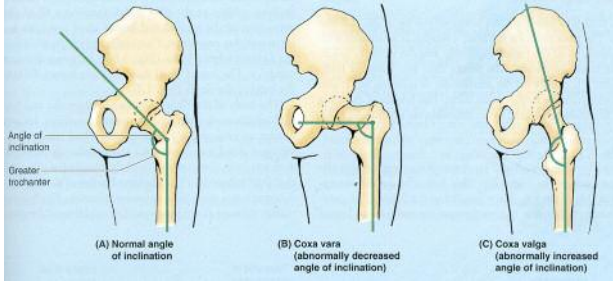


Collodi afizer açığı, coxa vara, coxa valga



- Collodi afizer açığı : 120-130°

.....

.....

.....

.....

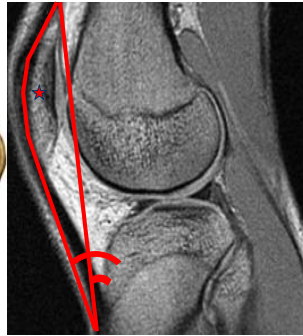
.....

.....

.....

.....

PATELLA



- M. quadriceps femoris'in insertio açısını büyütür.
- Vücudun en büyük sesamoid kemiğidir.

.....

.....

.....

.....

.....

.....

.....

.....



TIBIA ve FIBULA

- tibia platosu (kondiller)
- tuberositas tibia***
- linea muscoli solei
- facies articularis inferior
- malleolus medialis
- caput fibula
- malleolus lateralis
- talofibular (tibiofibular) çata
- membrana interossea cruris

Tibia'nın ön - iç yüzünde kas bulunmaz. Burası sadece deri ile örtülüdür.



.....

.....

.....

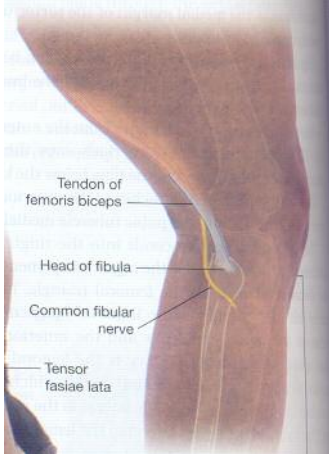
.....

.....

.....

.....

.....



.....

.....

.....

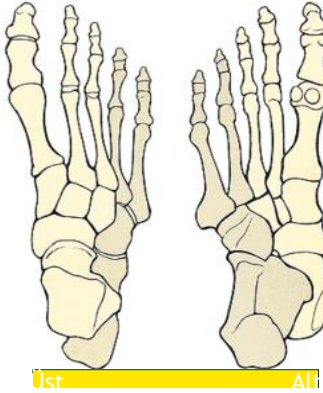
.....

.....

.....

.....

AYAK KEMİKLERİ



- talus
- calcaneus
- naviculare
- cuneiform'lar (3 ad.)
- cuboideum
- metatarsaller (5 ad)
- phalanx'lar (14 ad.)

.....

.....

.....

.....

.....

.....

.....

COLUMNA VERTEBRALIS



- 33-34 vertebra.
- 24ü hareketli,diğerleri sabittir.
- Lordoz ve kifoz
- foramen intervertebrale
- canalis vertebralis
- 23 discus intervertebralis
- Bölümleri
 - servikal (7)
 - thorakal (12)
 - lumbal (5)
 - sakral (5)
 - koksigeal (3 veya 4)

.....

.....

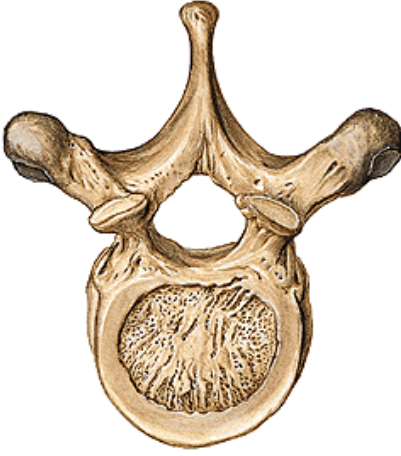
.....

.....

.....

.....

.....



.....

.....

.....

.....

.....

.....

.....

VERTEBRALARIN ESAS AYIRDEDİCİ ÖZELLİKLERİ

- Servikal :** Foramen transversarium
Thorakal : Fovea costalis
Lumbar : Processus mamillares ve
processus accessorius

.....

.....

.....

.....

.....

.....

.....

ATLAS (C1)



.....

.....

.....

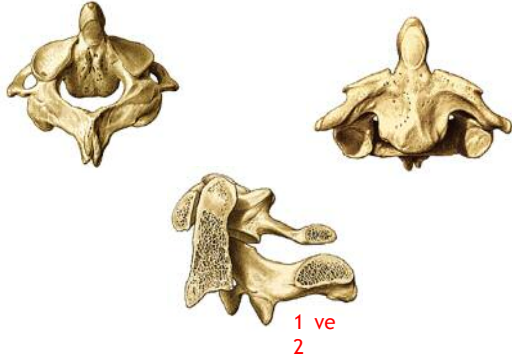
.....

.....

.....

.....

AXIS (C2)



Vertebra prominens (C7)



THORAKAL VERTEBRALAR

